

Stealthbox®

INSTALLATION GUIDE

for the

SB-T-SEQ/10W3

(Fits 2001 and Up Toyota Sequoia)



This Stealthbox is a product which requires professional installation skills and tools. Please read this installation guide thoroughly before beginning the project. It will guide you step by step through the installation. Several of the steps in this process may require two people to accomplish.

It is absolutely vital that the enclosure be properly mounted to the vehicle according to these instructions. Failure to mount the enclosure properly presents two problems: 1) The sub-bass performance will suffer due to the movement of the enclosure caused by the force exerted by the woofer(s) and 2) A loose enclosure presents a serious safety hazard in the event of a collision or sudden deceleration.

Please enjoy your JL Audio Stealthbox responsibly.

JL AUDIO®
Ahead of the Curve™

www.jlaudio.com

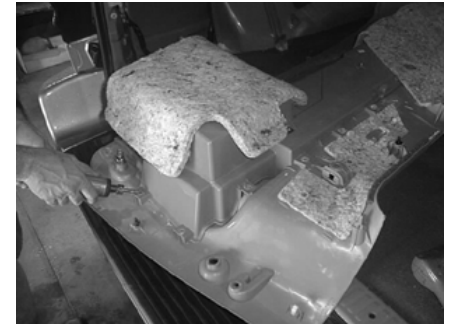
**START
HERE**
→



STEP 1: Remove the driver's side rear storage area cover:



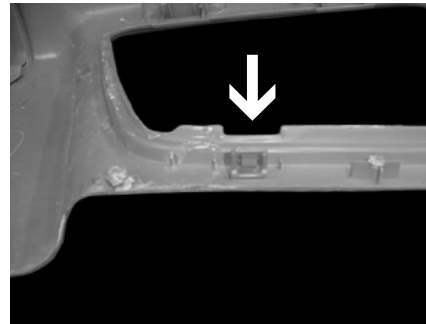
STEP 2: Remove the driver's side rear panel.



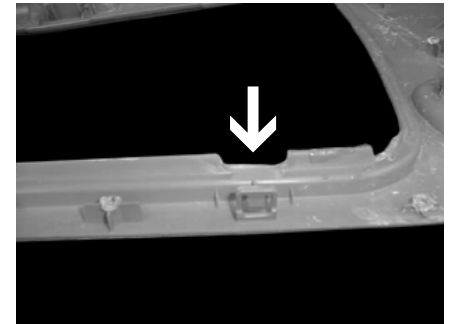
STEP 3: Grind off the plastic tabs which hold the pocket to the panel.



STEP 4: Remove the pocket from the panel.



STEP 5: Create a notch in the side panel as shown in the picture.



STEP 6: Create a second notch in the side panel as shown in the picture.



Continued on Page 2 →

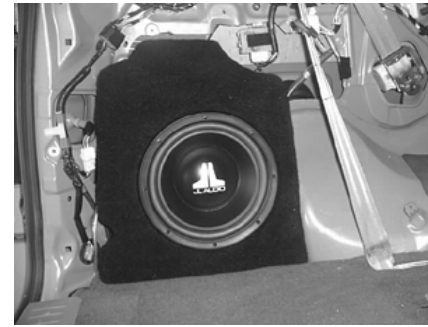
Cont.
From
Page 1
➔



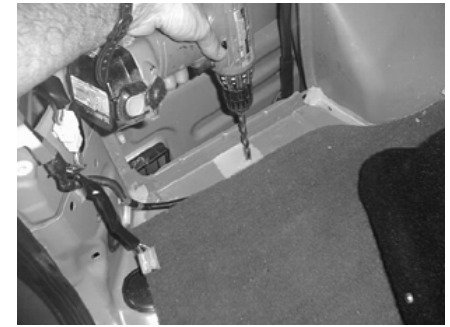
STEP 7: Insert supplied Socket Set Cup Screw into the enclosure so the rod extends approximately 1/4" out of the enclosure.



STEP 8: Roll the floor carpet back to expose the metal floor in the location shown above. Place the supplied wax square on the metal floor as shown above.



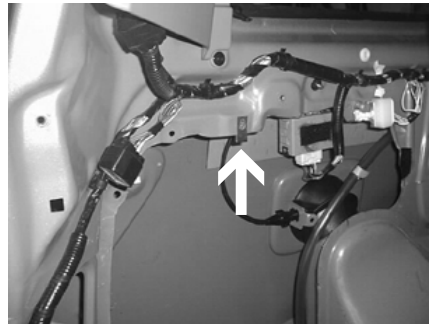
STEP 9: Place the Stealthbox into place so as to allow the Socket Set Cup Screw to make an impression in the wax square.



STEP 10: Using a 1/2" drill bit, drill a hole through the metal floor in the location of the impression in the wax square.



STEP 11: Adjust the Socket Cup Set Screw, so that it extends 1 1/2" out of the enclosure.



STEP 12: Insert the supplied U-bolt in factory hole.
(located at the top of the enclosure location as shown above)



STEP 13: Run speaker wires to the location of the Stealthbox. Check the Stealthbox for proper operation.



STEP 15: Place the Stealthbox in its proper location, making sure to place the threaded rod into the previously drilled hole in the floor.

STEP 14: Using the supplied 1/4" washer, 1/4" lock washer and 1/4"x1" bolt. Mount the L-bracket to top of the enclosure. The bottom of the L-bracket needs to point towards the driver's side fender.

STEP 16: Place the supplied 1/4" lock washer, 1/4" flat washer in that order onto the 1/4"x1" bolt. Pass the bolt through the mounted L-bracket and thread into the U-bolt installed in **STEP 12**. Do not fully tighten.



Continued on Page 3 ➔

Cont. From Page 2



STEP 15: Adjusting the Socket Set Cup Screw so that the proper length is exposed (the exposed end of the rod is slotted to accept a flat-blade screw driver to be used when adjusting the rod's position). Place the 3/8" flat washer, 3/8" lock washer and 3/8" bolt, in that order, on the threaded rod. Do not fully tighten.



STEP 17: Fully tighten the bolt on the top of the enclosure and the nut on the threaded rod on the bottom of the enclosure to secure the enclosure.



STEP 18: Reinstall the factory side panel.



STEP 19: Attach the supplied grill to the factory side panel.

**CONGRATULATIONS!
INSTALL COMPLETE.**

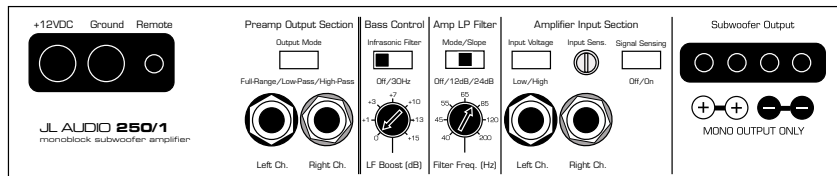
Included Hardware:

- (2) 1/4" Flat Washer
- (2) 1/4" Lock Washer
- (1) 1/4" U-Nut
- (2) 1/4" x 1" Bolt
- (1) L-Bracket
- (1) 3/8" Split Lock Washer
- (1) 3/8" x 1-1/4" Fender Washer
- (1) 3/8" x 2 1/4" Socket Cup Set Screw
- (1) 3/8" Hex Nut
- (1) Grille
- (1) 3" x 3" Wax Square

Specifications:

- Enclosure Type:** Acoustic Suspension (Sealed)
- Driver Type:** One JL AUDIO 10W3v2-D2 Subwoofer
- Nominal Impedance:** 4Ω
- Cont. Power Handling:** 300 Watts

JL Audio recommends using a high quality amplifier such as the JL Audio 250/1. The diagram below shows the recommended crossover, infrasonic filter and equalizer settings for the 250/1 when being used to power the the Audio Stealthbox®.



The JL Audio 250/1 is a very versatile audio component. Please consult the owner's manual for detailed information about installing and tuning this amplifier.

Mid/High Frequency Driver Information:

Front Applicable JL Audio Products:

- TR650-CSi & CXi
- VR650-CSi & CXi



Rear Applicable JL Audio Products:

- TR650-CXi, VR650-CXi



JL AUDIO
Ahead of the Curve™

www.jlaudio.com

10369 N. Commerce Pkwy, Miramar, Florida 33025-392

SB-T-SEQ/10W3v2-D2, JL AUDIO, Inc 2002

Phone: 954.443.1100

Page 3

Fax: 954.443.1111

Sheet SKU#011111 Revision 10/30/02